



Version 3.1

System Administrator Guide

This document provides information Ensemble Video System Administrators can use to design and implement an appropriate Ensemble Video organizational framework, manage Ensemble Video system settings, and ensure Ensemble Video system continuity and security.

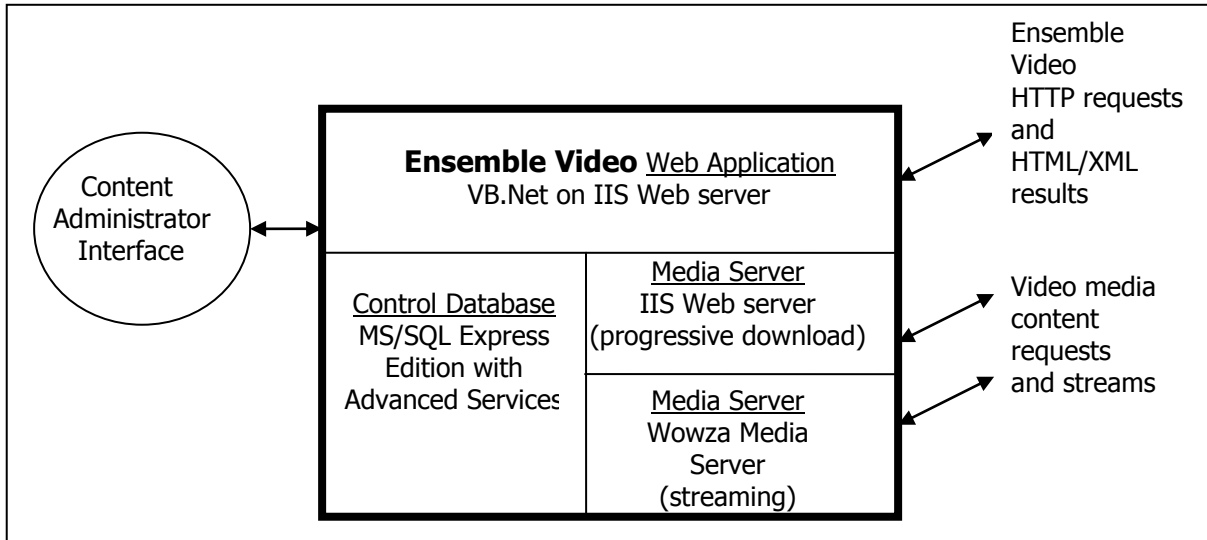
Table of Contents

Page 3	I. Technical Components of Ensemble Video
4	MS-SQL Server Considerations
4	Backup and recovery
Page 5	II. The Ensemble Video Organizational Framework
5	The System and Organization Administrators
6	Summary of User Roles
Page 8	III. Ensemble Video Administration Tab
8	Organizations
9	Configure Plug-in
10	Google Analytics
10	Media Source Templates
12	Authentication Sources
13	Content Types
14	Selecting an Embedded Player
14	Settings
14	Enabling and Using Audit Logging
15	License
Page 16	IV. Server Administration and Tools
16	The Video Management Service
18	Updating Ensemble Video Software
19	Securing Ensemble Video With SSL
19	Enabling SSL Security With the System Administration Tool
20	Web.config File Settings

I. Technical Components of Ensemble Video

Each installation of Ensemble Video has three components: the Web application, a Control Database, and one or more Media Servers. The Web application is written in VB.Net and must run on a Windows Server (Web Edition, Standard, or Enterprise) with MS Internet Information Server (IIS). The Control Database is an MS-SQL database. And the Media Server(s) can be a Web server(s) for progressive download and/or a streaming media server(s). In the simplest of installations these components all reside on a single server.

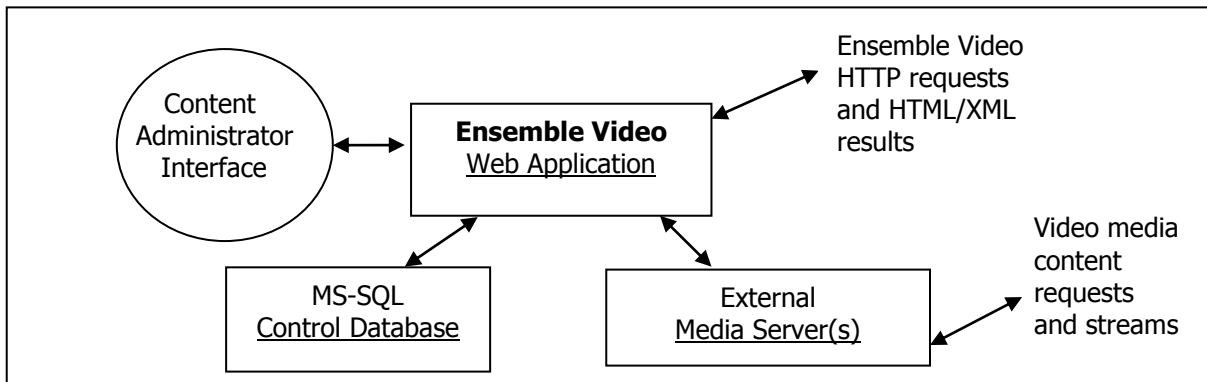
Ensemble Video all-in-one installation.



The control database holds all of the meta-data for all video entries and associated images and attachments as well as control information for the Ensemble Video Web application.

Many Ensemble Video customers already have one or more media servers that they want to use instead of, or in addition to, the media services resident on the Ensemble Video application server. Many also have an existing MS-SQL database they want to use for their control database, rather than installing a separate instance of MS-SQL on the Ensemble Video Web application server. This is also supported, and can be done easily with the network access to those external resources.

Ensemble Video installation with external control database and media servers.



MS-SQL

In the case of an external MS-SQL control database, an account with MS-SQL System Administrator privileges must be used at installation time to create the Ensemble Video database. This is only required once, during or prior to installation. A separate user with rights to manage the database will be used by Ensemble Video to create, add, and delete database tables and data.

As part of the upgrade from version 2.0 to version 3.0, all attachments and thumbnail images were migrated from local storage on the Ensemble Video application server to the MS-SQL database. This is a step toward providing a clean Web application environment that can be replicated for redundancy and fault tolerance.

Backup and Recovery

Ensemble Video is a Web application similar to others commonly used in enterprise environments. To ensure recovery in case of failure, it is critical to back up the database at least daily. The Ensemble Video system software folder and Web application directory should also be backed up regularly (they contain log files and other useful information). The system software is typically installed on "C:\Program Files\Symphony Video, Inc", while the Web application is part of the IIS directory structure, for example "C:\inetpub\wwwroot\ensemble."

The Symphony Video, Inc. program group on the server provides access to a backup script that you can modify and use to create a snapshot file from your MS-SQL Server, which can be backed up by your regular backup mechanism (see section IV, below, for more information on the system administrator program group). This backup script is designed to make it easier to configure database backup when using MS-SQL Express, which does not offer a built-in backup agent as other MS-SQL versions do.

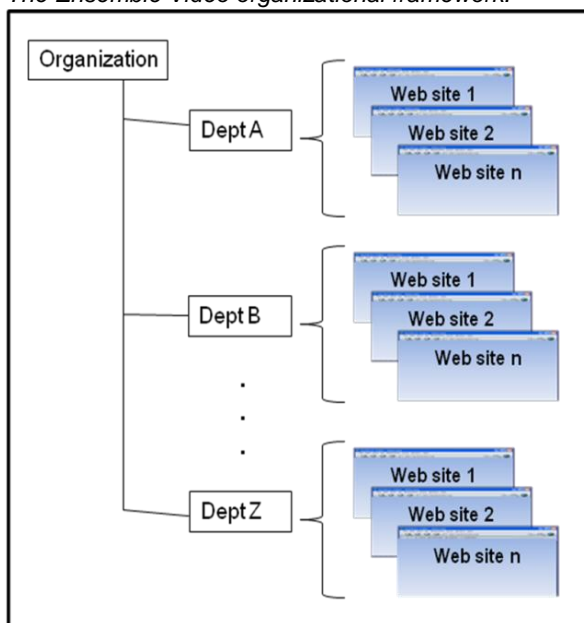
Ensemble Video technical support is available to consult on continuity strategies for organizations that need assistance with backup and recovery procedures.

II. The Ensemble Video Organizational Framework

Ensemble Video makes it easy to upload, catalog, and publish a library of video “titles” or video “entries.” Each entry has a title, keywords, production date, and a variety of other catalog descriptors and one or more media files. Ensemble was designed for de-centralized content management. This is implemented through a very flexible organizational framework, where different groups and users can maintain independent video libraries, but also share content across those libraries.

Within a single implementation of Ensemble Video at least one “organization” is defined. Within an organization any number of Ensemble Video “departments” can be created, where each department has its own independent video library. Each department has one or more Content Administrators who create video entries that are owned by their department and appear in the media library listing for that department.

The Ensemble Video organizational framework.



A department Content Administrator may set up one or more Internet Web publishing destinations (also called “Web sites”) for publishing content for external constituents, and one or more Web destinations for internal viewers (e.g., a training video Web site or a Web site where organizational processes or events are documented).

While an Ensemble Video organizational structure can indeed correspond to a single organization with multiple named departments that exist within that organization, the system is not limited to that terminology and model. For example, a college may create an organization for all faculty members, and then create a department for each faculty member so they can manage and publish their own video content independently. Or a regional school district consortium may establish an

organization for each participating school district, and then districts could in turn create departments as needed within their own organization. An Ensemble Video department can be created for any individual or group of individuals that want or need to manage media in their own independent library.

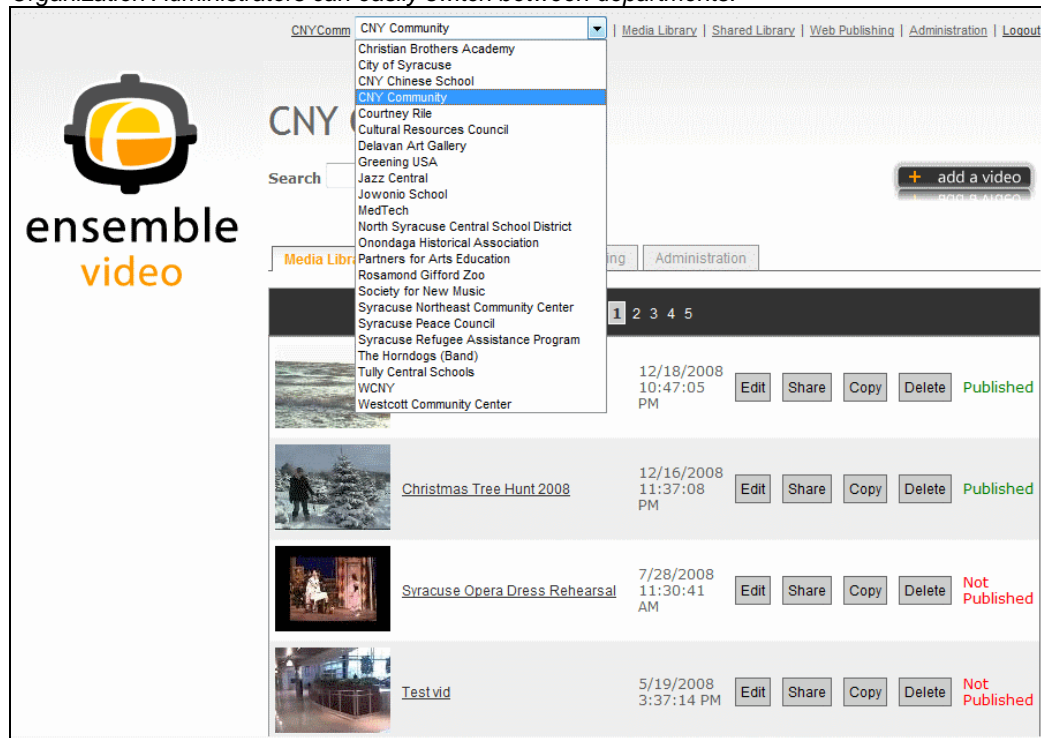
System and Organization Administrators

The installation of Ensemble Video creates an Ensemble Video System Administrator account. This account is also the Organization Administrator for an initial organization defined during the installation procedure. The System Administrator can create additional organizations, and create Organization Administrator account(s) for each organization created. For more on the System Administrator role see the **Ensemble Video Version 3.1 System Administrator Guide**.

An Organization Administrator can create and manage any number of departments within his or her organization, and create and manage any number of user accounts for each department.

When an Organization Administrator logs in, he or she can move between departments in the organization via a drop-down menu at the top of the Ensemble Video Contributor Interface.

Organization Administrators can easily switch between departments.



An Organization Administrator can add a new department by clicking on the **Departments** control in the Administration Tab or selecting **--Manage--** from the dropdown menu that enables switching between departments libraries. More information on managing departments is provided in the Departments section on page 6.

Summary of User Roles

System Administrators

The super user account for creating organizations and managing system-wide settings

- Can create and edit Content Type definitions, and edit Application Settings
- Can configure an LDAP authentication source
- Can create new organizations
- Can switch to any organization and any department
- Has access to all Administrative controls in the Administration Tab

Organization Administrators

Account used to manage departments, users, and media server integration

- Can create new departments
- Can add, edit, and delete user accounts for departments in the organization
- Can set up Media Sources for departments in the organization
- Can switch to any department in the organization

Content Administrator (Contributor)

These users manage, catalog, and publish video content using Ensemble Video

- Is associated with a single department
- Can add, edit, publish, and delete video entries
- Can define, edit, and delete Web publishing destination
- Can customize bandwidth labels
- Can add department Shares and authorize Direct Publishing permissions

Content Administrator (Editor)

These users can

- Edit and publish videos in the department Media Library
- Publish videos in the Shared Library

Content Administrator Editors cannot Add or Delete videos, and do not have access to the Web Publishing or Administration Tabs.

Viewer

Can view “viewable” or “published” items in the Media Library and any content that is in the department Shared Library.

The Organization Administrator sets up Media Sources for each department. Media Sources provide the linkage to the back-end media servers, and there are several different types of Media Sources that can be assigned to a department: Upload Directory, Watch Directory, TANDBERG Content Server, and Podcast Producer. This is covered in more detail in the **Ensemble Video 3.1 Organization Administrator Guide**.

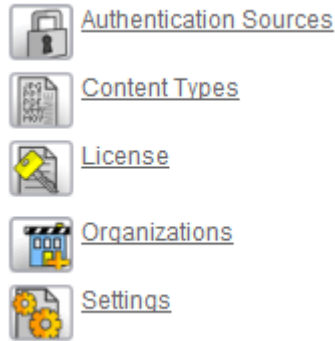
To determine how you want to organize your Ensemble implementation, consider the following two critical questions:

1. *Who will configure Media Sources for departments that use the system?*
2. *Who will create and add departments and users?*

If you want to manage these things centrally, then it likely makes sense to set entities up as departments in a single shared organization. If these activities are going to be farmed out to various entities, then you will likely want to set up those entities as independent organizations.

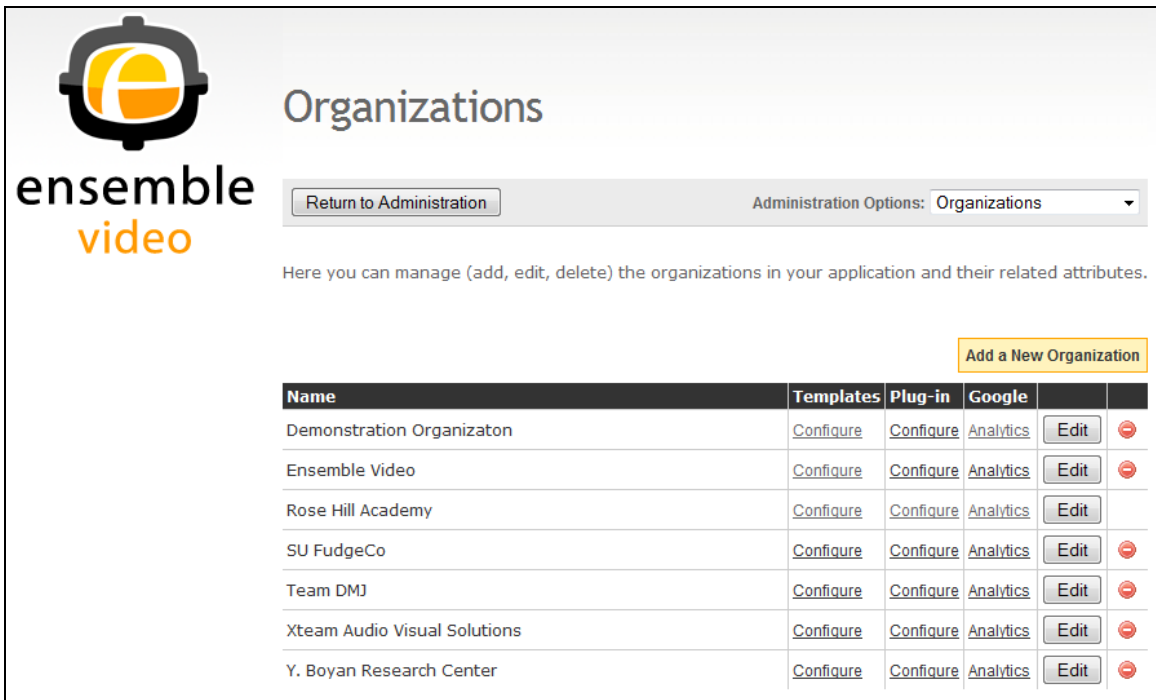
III. Ensemble Video Administration Tab

When you log into Ensemble Video as System Administrator, and go to the Administration Tab, you have access to five control interfaces.



Organizations







The Organization control interface provides you with a listing of Organizations defined for your implementation of Ensemble Video. For each Organization you can Edit the name of the Organization, delete the Organization by clicking on the Delete icon, or configure default settings for the HTML Plug-in, Media Source Templates, and Google Analytics.



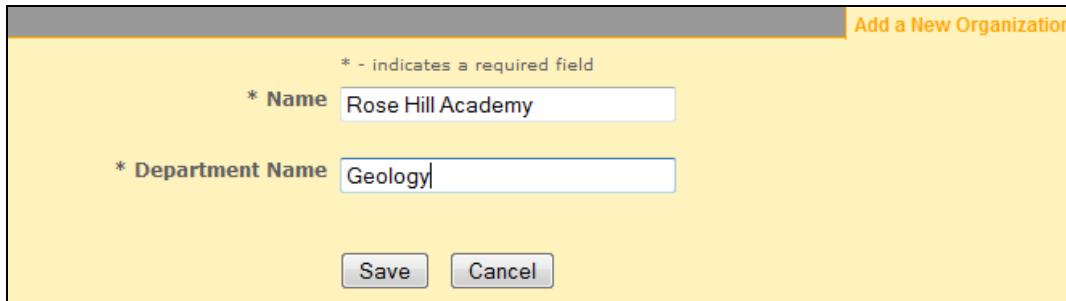
Return to Administration Administration Options: **Organizations**

Here you can manage (add, edit, delete) the organizations in your application and their related attributes.

Add a New Organization

Name	Templates	Plug-in	Google		
Demonstration Organizaton	Configure	Configure	Analytics	Edit	
Ensemble Video	Configure	Configure	Analytics	Edit	
Rose Hill Academy	Configure	Configure	Analytics	Edit	
SU FudgeCo	Configure	Configure	Analytics	Edit	
Team DMJ	Configure	Configure	Analytics	Edit	
Xteam Audio Visual Solutions	Configure	Configure	Analytics	Edit	
Y. Boyan Research Center	Configure	Configure	Analytics	Edit	

To create a new Organization click on the **Add a New Organization** button, and give the Organization a name. You will also need to specify a name for a new Department in that Organization.



* - indicates a required field

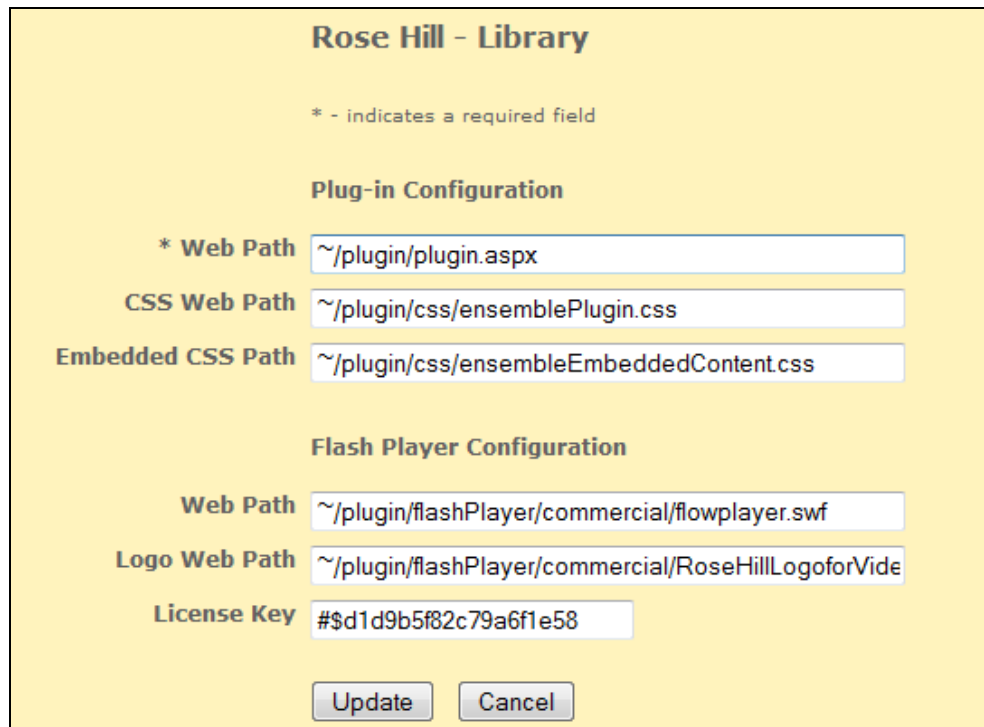
* Name

* Department Name

Once you've added the Organization, a new row will be added to the list of Organizations you can manage. If you want to change the Organization name, you can simply click on the **Edit** button and enter the new name.

For each Organization listed, you can modify settings for the HTML Plug-in and Google Analytics integration, and you can create Media Source Templates. Just click on the link in the **Templates**, **Plug-in**, or **Google** column of the Organization listing table.

Configure Plug-in



Rose Hill - Library

* - indicates a required field

Plug-in Configuration

* Web Path

CSS Web Path

Embedded CSS Path

Flash Player Configuration

Web Path

Logo Web Path

License Key

The code for the Ensemble Video HTML Plug-in is written in Javascript, and you are free to modify it to suit your own purposes. We encourage software developers to use the Ensemble Video Simple Publishing Application Programming Interface (API) to create customer viewer interfaces using this mechanism (for more on the Ensemble Video API, see <http://wiki.ensemblevideo.com>).

If you do create custom HTML Plug-in code, you can use this interface to configure access to it so that content will be displayed using your version of the Plug-in when embedded in a Web site. (Contact Ensemble Video technical support for assistance).

For content that will be viewed with the Flash-based Flowplayer, you can also opt to use the Commercial version of the Flowplayer, which enables you to specify a custom logo that will appear in the upper right portion of the player.



This is an option you can set for any Ensemble Video Organization, but you must purchase and enter a license key for the commercial Flowplayer for to take advantage of this feature (for more information see <http://flowplayer.org/download/index.html>).

Google Analytics

The Google Analytics configurator lets you set a Google Analytics ID which will be used for all video views through the embedded Flash-based Flowplayer. If you set it at the Organization level ALL videos within the Organization that are viewed with the Flowplayer will be tracked. Use your Google Analytics ID to capture visit and event detail for your videos.

A screenshot of a dialog box titled 'Rose Hill - Library'. The dialog box has a yellow background and a thin black border. It contains a text input field labeled 'Analytics ID' with a blue border. Below the input field are two buttons: 'Save' and 'Cancel', both with a light gray background and a thin black border.

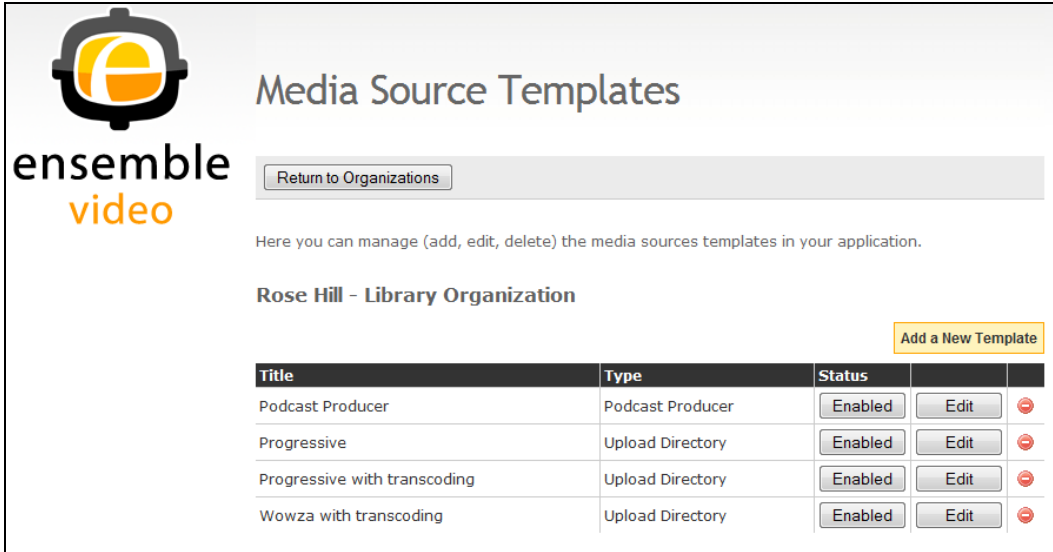
Note that at the Department and Web Destination levels your users can insert their own Google analytics ID, so you may not capture ALL views if you do not have direct control over all the departments and Web destinations in your Organization. This is provided as a convenience at the Org level for Organizations that want to track ALL video views with a single Google Analytics ID. For more on Google Analytics go to <http://google.com/analytics>.

Media Source Templates

Media Sources for each Department are usually specified by Organization Administrators for each Department within an Organization. Organization Administrators configure these Department Media Sources through a Media Sources control accessible in the Administration

Tab. For more on this see the **Ensemble Video Version 3.1 Organization Administrator Guide**.

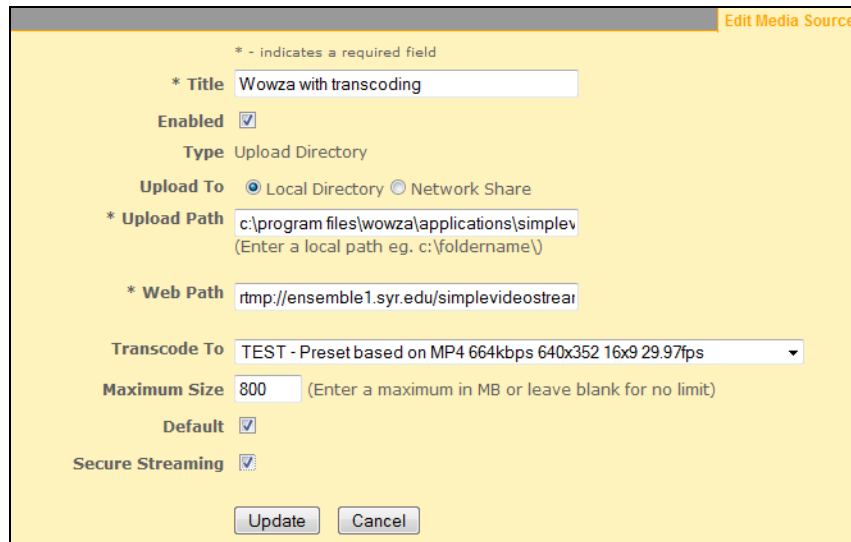
As System Administrator, you can create set a set of Media Sources Templates that Organization Administrators will be able to choose from when they are creating Media Sources for each of their Departments. Also, you can specify one of the Upload Media Source Templates as a Default, and if you do, the associated media server directory and Media Source will be automatically created for each Department when those Departments are created.



The screenshot shows the 'Media Source Templates' management page for the 'Rose Hill - Library Organization'. It features the Ensemble Video logo, a 'Return to Organizations' button, and a brief instruction: 'Here you can manage (add, edit, delete) the media sources templates in your application.' Below this is a table listing four templates, each with 'Enabled', 'Edit', and delete icons. An 'Add a New Template' button is located to the right of the table.

Title	Type	Status		
Podcast Producer	Podcast Producer	Enabled	Edit	⊘
Progressive	Upload Directory	Enabled	Edit	⊘
Progressive with transcoding	Upload Directory	Enabled	Edit	⊘
Wowza with transcoding	Upload Directory	Enabled	Edit	⊘

Here is an example of an Upload Media Source Template. The media server directory and media URL you see here serve as the root paths for the media server and media URL paths that are specified in the Department level Media Source. The other attributes of the Template, such as Transcode setting, upload size limits, and so forth, are also automatically inserted into a new Department Media Source when this Template is chosen.



The screenshot shows the 'Edit Media Source' form for a 'Wowza with transcoding' template. The form includes fields for Title, Enabled status, Type (Upload Directory), Upload To (Local Directory), Upload Path, Web Path, Transcode To (TEST - Preset based on MP4 664kbps 640x352 16x9 29.97fps), Maximum Size (800 MB), Default status, and Secure Streaming status. 'Update' and 'Cancel' buttons are at the bottom.

* - indicates a required field

* Title: Wowza with transcoding

Enabled:

Type: Upload Directory

Upload To: Local Directory Network Share

* Upload Path: c:\program files\wowza\applications\simplev
(Enter a local path eg. c:\foldername\)

* Web Path: rtmp://ensemble1.syr.edu/simplevideostrear

Transcode To: TEST - Preset based on MP4 664kbps 640x352 16x9 29.97fps

Maximum Size: 800 (Enter a maximum in MB or leave blank for no limit)

Default:

Secure Streaming:

Update Cancel

Details on each of the fields in this form are available in the **Ensemble Video 3.1 Organization Administrator Guide**.



If you have an enterprise LDAP (or Active Directory) repository, you can add it as an authentication source for Ensemble Video. Then, when an Organization Administrator creates a user account, he or she can simply enter a username and specify the LDAP source for authentication.

To configure an LDAP authentication source, go to the Administration tab and click on the **Manage Authentication Sources** control. You will need to provide the information shown in the screen shot below.

Form for configuring an LDAP authentication source.

Test Department

* - indicates a required field

* Name

* Server Name

* Port

* Root Path

Search Filter

Use SSL?

Direct Bind?

Bind Username

Bind Password

Bind Path Format

Username Attribute

Username Format

* User ID Attribute

* First Name Attribute

* Last Name Attribute

* Email Attribute

Content Types



You can create, manage, and delete content types through the **Content Types** control interface.

Add a New Content Type						
Extension	Description	Icon	Generate Thumbnails	Use Embedded Player	Allow Transcoding	
	video/tandberg-cs		<input checked="" type="checkbox"/>		<input checked="" type="checkbox"/>	Edit
.	video/unknown		<input checked="" type="checkbox"/>		<input checked="" type="checkbox"/>	Edit
.3gpp	video/3gpp		<input checked="" type="checkbox"/>		<input checked="" type="checkbox"/>	Edit
.3gpp2	video/3gpp2		<input checked="" type="checkbox"/>		<input checked="" type="checkbox"/>	Edit
.asf	video/x-ms-asf		<input checked="" type="checkbox"/>		<input checked="" type="checkbox"/>	Edit
.asr	video/x-ms-asr		<input checked="" type="checkbox"/>		<input checked="" type="checkbox"/>	Edit
.asx	video/x-ms-asf		<input checked="" type="checkbox"/>		<input checked="" type="checkbox"/>	Edit
.avi	video/avi		<input checked="" type="checkbox"/>		<input checked="" type="checkbox"/>	Edit
.divx	video/divx		<input checked="" type="checkbox"/>		<input checked="" type="checkbox"/>	Edit
.doc	application/ms-word		<input checked="" type="checkbox"/>		<input checked="" type="checkbox"/>	Edit
.docx	application/ms-word		<input checked="" type="checkbox"/>		<input checked="" type="checkbox"/>	Edit
.f4v	video/x-f4v		<input checked="" type="checkbox"/>	<input checked="" type="checkbox"/>	<input checked="" type="checkbox"/>	Edit
.fli	video/x-fli		<input checked="" type="checkbox"/>	<input checked="" type="checkbox"/>	<input checked="" type="checkbox"/>	Edit
.flv	video/x-flv		<input checked="" type="checkbox"/>	<input checked="" type="checkbox"/>	<input checked="" type="checkbox"/>	Edit
.gif	image/gif		<input checked="" type="checkbox"/>		<input checked="" type="checkbox"/>	Edit

Clicking the **Edit** button for a content type gets you to the form where you can edit information for an existing content type.

Edit Content Type

* File Extension

Description
(e.g., video/unknown)

Icon Image Url
(e.g., ~/images/contentTypes/video-unknown.gif)

Generate Thumbnails

Use Embedded Player

Allow Transcoding

Here, you can specify file extension and description, and you can specify an icon that will display with a media link for that content type. You can indicate that thumbnail/preview images should be generated.

If you want to use Ensemble Video to manage a content type that is not yet defined, click on the **Add a New Content Type** button on the right side of the screen.

Selecting An Embedded Player

For certain media types (see table below) you can select an embedded player which will be used in the Media Library Preview Video page, Quick Publish pages, and wherever the HTML Plug-in is embedded (provided you are using the latest version of the Ensemble Video HTML Plug-in code).

* File Extension .mp4
Description video/mp4
(e.g., video/unknown)
Icon Image Url ~/images/contentTypes/video-mp4.gif
(e.g., ~/images/contentTypes/video-unknown.gif)
Generate Thumbnails
Use Embedded Player FlowPlayer
Allow Transcoding
Update Cancel

In the Content Types interface, click on **Edit** on the line for the media type you wish to configure an embedded player for, and use the dropdown menu to select a player.

The only embedded players currently supported are the QuickTime Player and Flowplayer (a Flash-based player). And these two players only work with certain media types:

Embedded Player	Media Formats supported
Flowplayer	works with Flash Video (flv), mp3 audio, and H.264 compressed video in mp4, m4v, and f4v files
Quicktime	can be configured for QuickTime video (mov), along with m4v and mp4 video files

This is a **system-wide setting**, so all Previews, Quick Publish, and HTML Plug-in pages will be affected. Be sure to consider the impact across all your users before making this change.

Settings



The **Application Settings** control lets you modify some system settings. Generally, this will be used only by Ensemble Video technical support staff. However, you may want to set a default image when preview or thumbnail images are not generated, or replace the logo that appears in the upper left-hand corner of the Ensemble Video interface. To change one of these settings, click on the Edit button, modify the information as needed, and click Save. You also may want to enable and use the Ensemble Video Audit Log capability, which is new in version 3.0.

Enabling and Using Audit Logging

In the **Application Setting** control you can enable Audit Logging. If you do, Ensemble Video will keep track of all the users who log in, and log whenever a user adds, edits, or views a video. The



logging information is available in an **Audit Log** control, which is available in the Administration Tab only when Audit Logging is enabled.

Audit Log

Return to Administration Administration options: Audit Log

<< First < Previous Page 1 of 35 Next > Last >> 25 /page Download CSV

Date/Time	User	Event	Content ID	Url	Title
10/2/2009 10:51:12 PM	test	logon		default.aspx	
10/2/2009 10:50:59 PM	cadmin	viewVideo	399218CD-E509-48FF-8E4B-DB1BE13E1B50	contentpreview.aspx	Festival Race
10/2/2009 10:50:51 PM	cadmin	editVideo	399218CD-E509-48FF-8E4B-DB1BE13E1B50	wizardvideodetails.aspx	Festival Race
10/2/2009 10:50:40 PM	cadmin	viewVideo	5A641D0F-CEBC-42AC-971F-12E6D7B167E1	contentpreview.aspx	Funny Tmpkyap2
10/2/2009 10:50:36 PM	cadmin	editVideo	5A641D0F-CEBC-42AC-971F-12E6D7B167E1	wizardvideodetails.aspx	Funny Tmpkyap2
10/2/2009 10:50:32 PM	cadmin	logon		default.aspx	

The Audit Log interface enables you to browse the audit log online, or you can download the complete audit log in a CSV formatted file.


License



The final system administrator control, **License**, is for updating your Ensemble Video license key. This control lets you know how many titles you are licensed for and expiration date for your license if you have an annual license.

To update the license click on **Update License**, paste in the license key provided by Ensemble Video or your authorized dealer or reseller, and then agree to the license terms.

abcove | Whitman School of Management | Media Library | Shared Library | Web Publishing | Administration | Logout

 **ensemble video**

Manage License

Return to Administration Administration options: License

Update License Remove License

Server ID: E553-2197-4679-62EA-CFAC-FA44-7629-DA24

License Key: Valid license key

Expiration Date: Never

Number of Titles Licensed: Unlimited

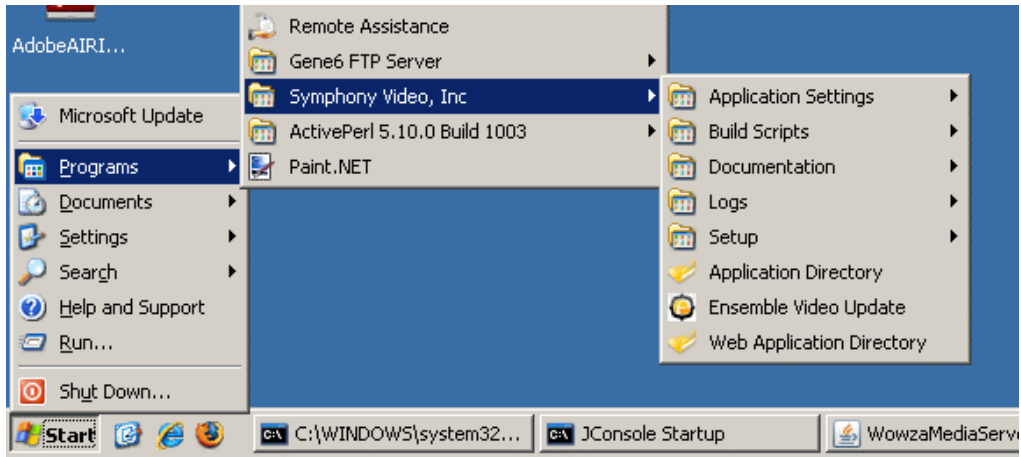
Number of Titles Used: 2101

POWERED BY ensemble video

© 2008 Symphony Video, Inc. Blog | Resources v2.0.2.0
Ensemble Video™ is a registered trademark of Symphony Video, Inc.

IV. Server Administration and Tools

On the Ensemble Video application server, a program group provides access to several useful System Administrator resources and functions.



Applications Settings For specifying system-wide settings

Build Scripts System utilities useful when upgrading/troubleshooting, this also provides access to a script for taking a snapshot of an Ensemble MS-SQL database

Documentation Takes you to manuals and tech support resources

Logs For verifying proper function of the system

Setup To run the Ensemble Video software installation process

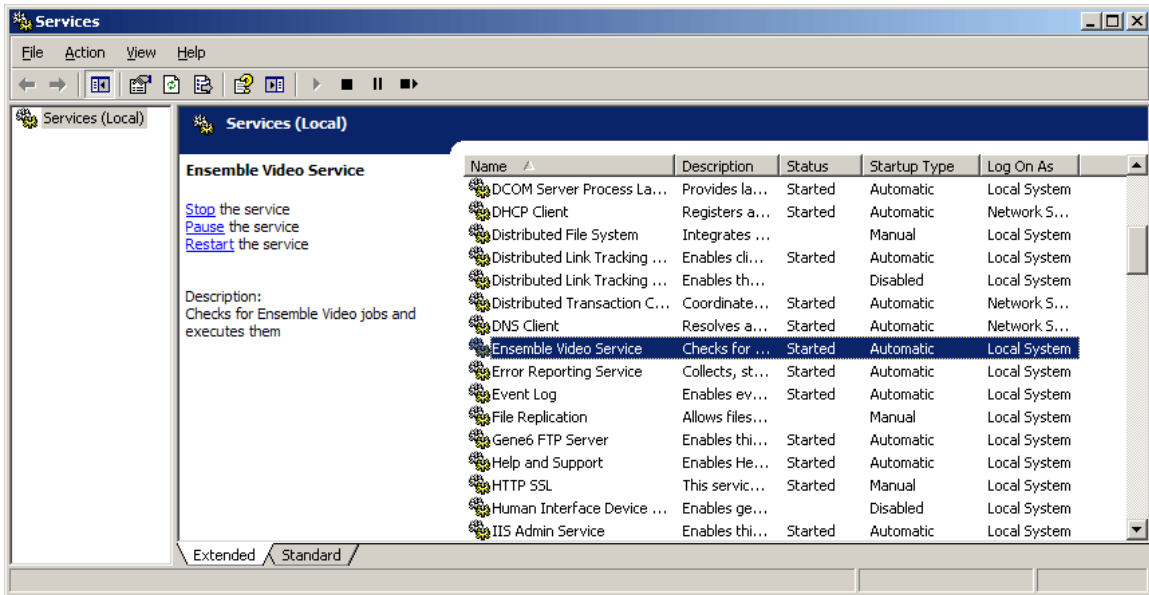
Application Directory Takes you directly to the application root directory where the video management service and other key software components reside

Ensemble Video Update Tool for querying update status and applying new software updates

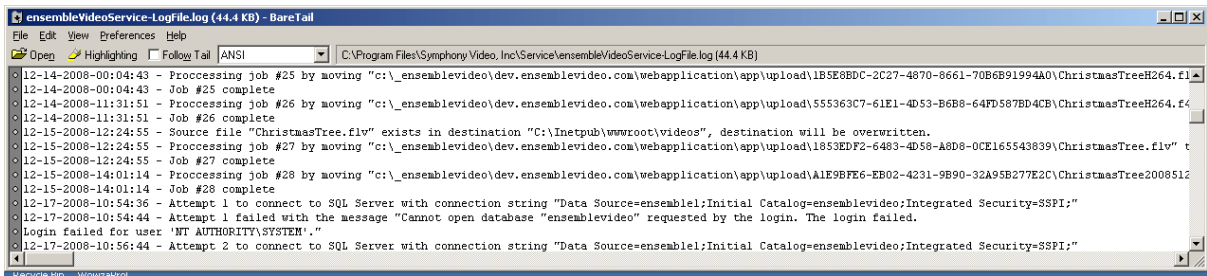
Web Application Directory Takes you directly to the Web application root directory

The Video Management Service

A video management service is installed on the application server. This runs as a Windows Service ("Ensemble Video Service" – see screen shot below). When a file is uploaded, it automatically copies it to the appropriate media server using the directory and authentication credentials provided in the appropriate Media Source.



If you find that uploaded files are not available for streaming/download once they are uploaded, be sure to check that the Ensemble Video Management service is running (it should also be configured to start automatically on system restart). If the service is running, you can look at the Video Management Service Log file to see if there are any error messages that were generated when the file was copied to a media server directory.



You can view the log using the system administrator tool on the Ensemble Video Web application server.

Start->Programs->Symphony Video, Inc->Logs->Ensemble Video Service Log

The log file is located in the system software directory, in the service directory. For example:

`"C:\Program Files\Symphony Video, Inc\Service\ensembleVideoService-LogFile.log"`

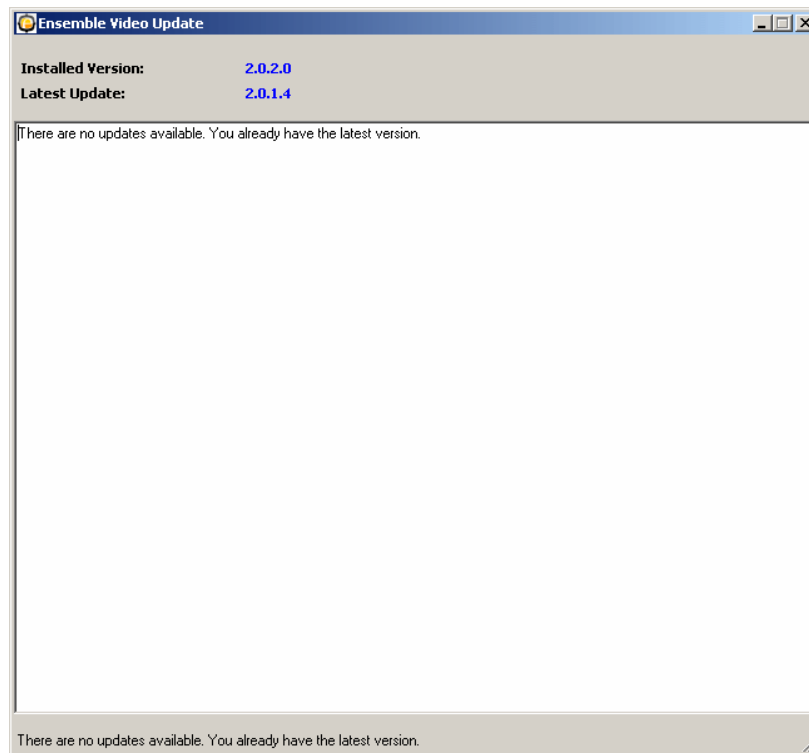
Updating Ensemble Video Software

A system tool is accessible on the Ensemble server to query for and install Ensemble Video software updates.

Start->Symphony Video, Inc->Ensemble Video Update

This brings you to a Window where you can see what updates are available.

Please contact Ensemble Video technical support if you need or want to apply an update.



The Ensemble Video Update Log also provides information about all updates that have been applied. To view the update log go to:

Start->Programs->Symphony Video, Inc->Logs->Ensemble Video Update Log

Securing Ensemble Video with SSL

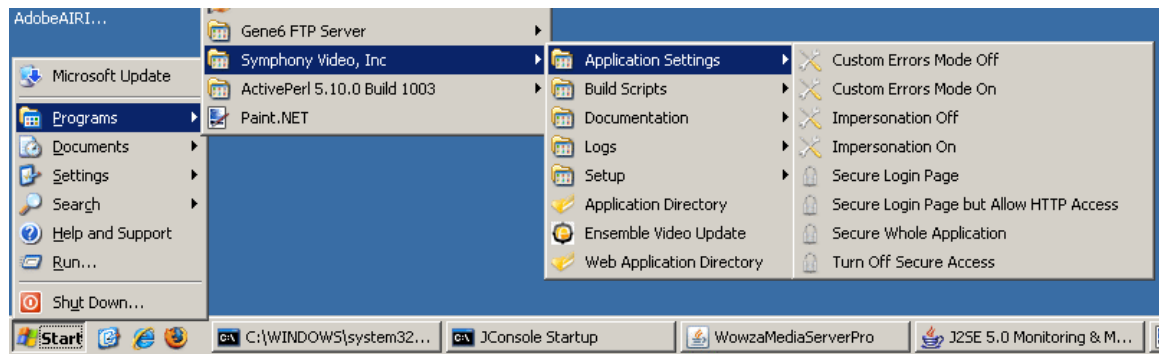
After you install a signed SSL certificate on the Ensemble Video application server, there is still some minor configuration to do to configure SSL within Ensemble Video. Depending on your security needs, choose from these three options:

1. **Secure only the logon pages** (Login.aspx and Default.aspx). In this option, you can secure the logon pages via SSL, but force all other requests from client to server over un-encrypted HTTP. This option will still offer encryption of user logins, yet provide the best performance for other client requests to the application.
2. **Secure the entire site via SSL.** This will make every page accessible only via SSL, and, while this is the most secure option, there may be performance implications of using Ensemble in this manner since all requests between client and server must be encrypted. This includes preview animations, thumbnails, and video uploads.
3. **Secure the logon pages, and don't force HTTP over the other pages.** This option is similar to (2) except requests to the pages other than the login page can be encrypted as well. Once logged in, the end user can issue requests using HTTP or HTTPS.

Enabling SSL Security via Ensemble System Administration Tool

Once your Signed SSL certificate is installed, an option is available on the Ensemble server to set the proper settings in Ensemble to implement any of the three security scenarios described above.

IMPORTANT: Always make a back up copy of your web.config file prior to using this tool.



Start->Symphony Video, Inc->Application Settings->Secure Login Page

Start->Symphony Video, Inc->Application Settings->Secure Login Page but allow HTTP Access

Start->Symphony Video, Inc->Application Settings->Secure Whole Application

Start->Symphony Video, Inc->Application Settings->Turn Off Secure Access

Web.Config File Settings

Security is enabled through changes to the Ensemble Video **web.config** file, which is found in the /app folder under the directory where you installed the Ensemble Video web application.

By default, SSL is disabled and this section looks like this:

```
<!-- edit this section to change which pages are secured via SSL -->
<secureWebPages warningBypassMode="AlwaysBypass">
  <files>
    <!--
      <add path="Login.aspx" />
      <add path="Default.aspx" />
    -->
  </files>
  <directories>
    <add path="/" recurse="True" secure="Ignore" />
  </directories>
</secureWebPages>
```

Option 1: Securing only the logon pages

To secure only the logon pages, edit the `secureWebPages` section of the **web.config** file to look like this:

```
<!-- edit this section to change which pages are secured via SSL -->
<secureWebPages warningBypassMode="AlwaysBypass">
  <files>
    <add path="Login.aspx" />
    <add path="Default.aspx" />
  </files>
  <directories>
    <add path="/" recurse="True" secure="Insecure" />
  </directories>
</secureWebPages>
```

Option 2: Secure the entire site

To secure the entire site, edit the `secureWebPages` section of the **web.config** file to look like this:

```
<!-- edit this section to change which pages are secured via SSL -->
<secureWebPages warningBypassMode="AlwaysBypass">
  <files>
    <add path="Login.aspx" />
    <add path="Default.aspx" />
  </files>
  <directories>
    <add path="/" recurse="True" secure="Secure" />
  </directories>
</secureWebPages>
```

Option 3: Securing the logon pages

To the secure logon pages and allow the end user to use HTTP or HTTP for the remaining pages, edit the `secureWebPages` section of the **web.config** file to look like this:

```
<!-- edit this section to change which pages are secured via SSL -->
<secureWebPages warningBypassMode="AlwaysBypass">
  <files>
    <add path="Login.aspx" />
    <add path="Default.aspx" />
  <directories>
    <add path="/" recurse="True" secure="Ignore" />
  </directories>
</secureWebPages>
</files>
```