

This tutorial assumes you have administrative rights to Blackboard and you have downloaded the Ensemble Video Open Source Building Block Package. You can download the building block package here: <http://projects.oscelot.org/gf/project/ensembleb2/>.

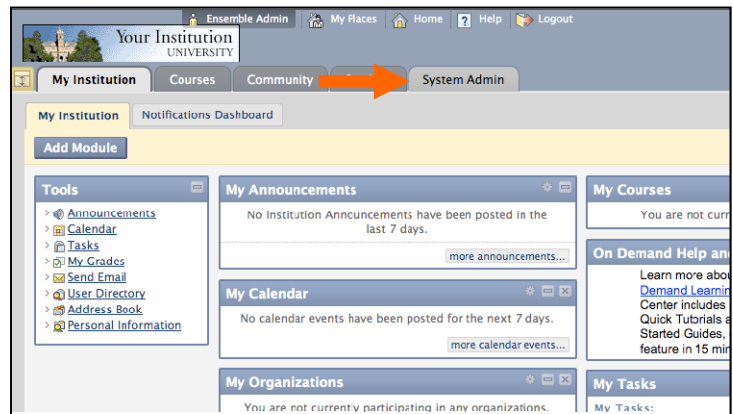


## Login to Blackboard

Login with your Blackboard administrator account.

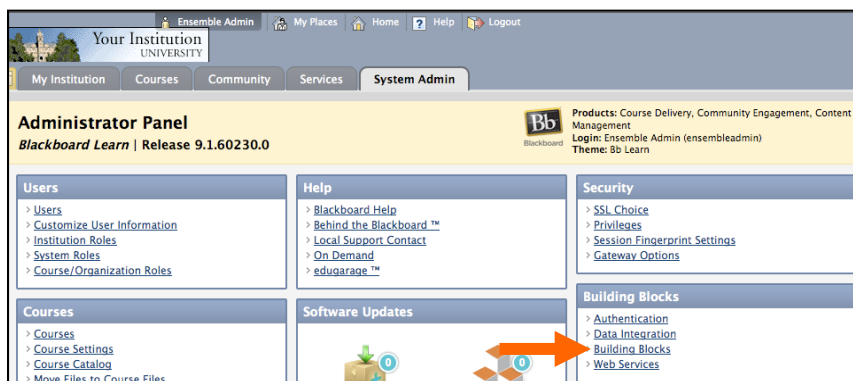
## Go to System Administration

Click on the "System Administration" tab.



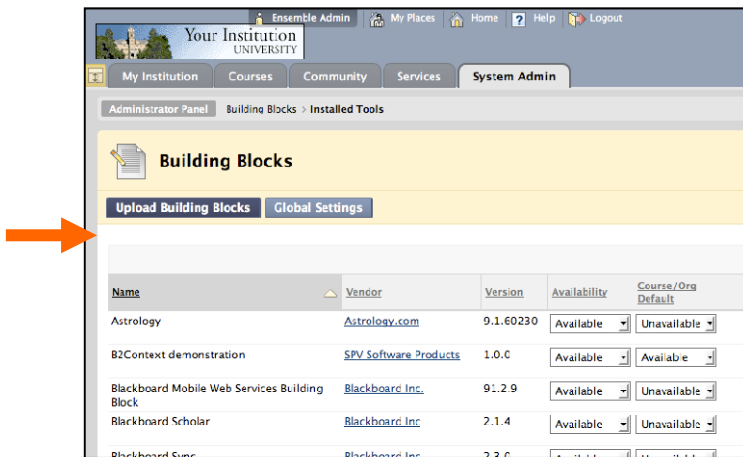
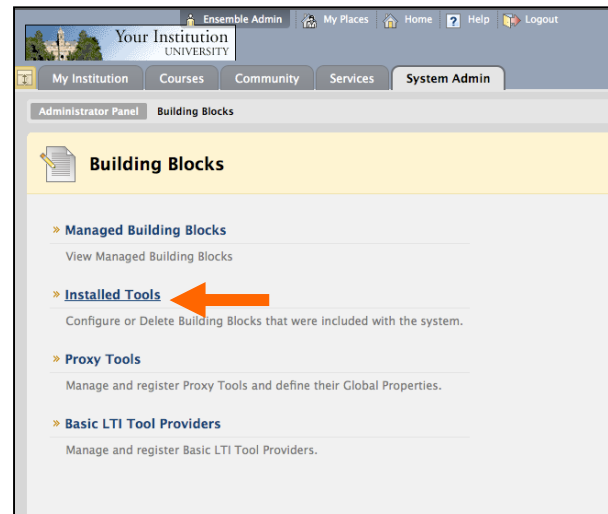
## Go to Building Blocks

Click on the "Building Blocks" link in the Building Block area.



## Go to Installed Tools

Click on the "Installed Tools" link. You can configure or Delete Building Blocks that are included in the system.



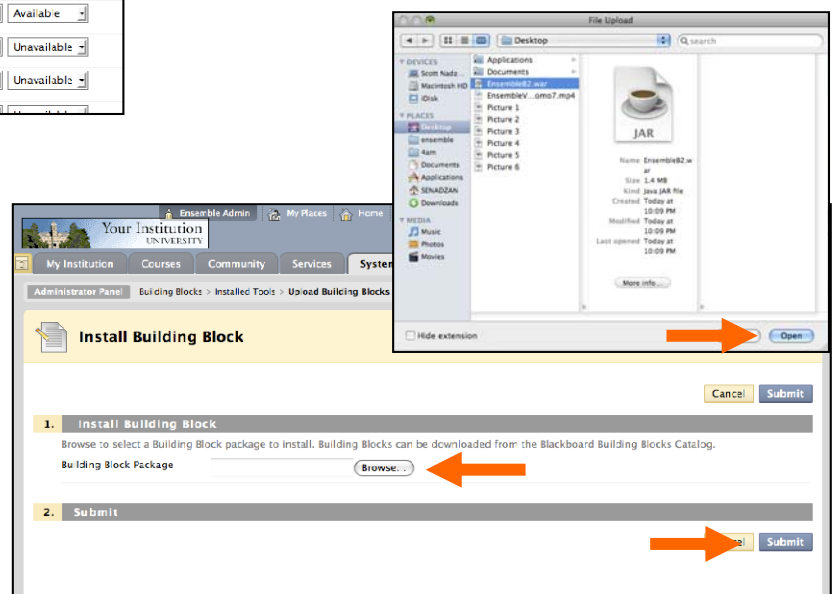
## Upload Building Block

Click on "Upload Building Blocks" to upload the Open Source Ensemble Video Blackboard Building Block.

## Attach .war File

Select Browse to attach Building Block Package (.war file)

Upload the ".war" file to Blackboard from your computer and click "Submit."

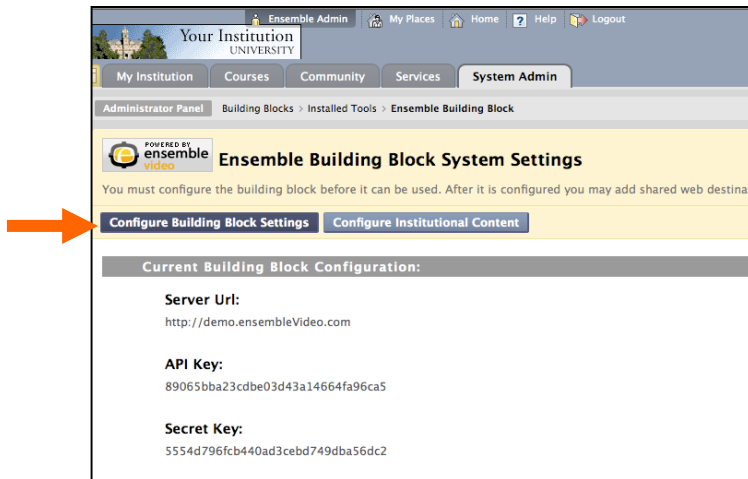


## Find the Ensemble Building Block in the List

Change to "Available" for both "Availability" and "Course/Org Default" columns.

Click on the "Settings" button.

Common Cartridge Extension	Blackboard Inc.	9.1.60230	Available	Unavailable	<a href="#">View Components</a>	<a href="#">Settings</a>	<a href="#">Delete</a>
Data Integration - IMS Enterprise XML	Blackboard Inc.	9.1.60230	Available	Unavailable	<a href="#">View Components</a>	<a href="#">Settings</a>	<a href="#">Delete</a>
Data Integration - LIS	Blackboard Inc.	9.1.60230	Available	Unavailable	<a href="#">View Components</a>		<a href="#">Delete</a>
Ensemble Building Block	Syracuse University (School)	1.0.0	Available	Available	<a href="#">View Components</a>	<a href="#">Settings</a>	<a href="#">Delete</a>
GoogleModule	Google	1.1.0	Available	Available	<a href="#">View Components</a>		<a href="#">Delete</a>
HETemplateModules	Blackboard Inc.	1.0.2	Available	Unavailable	<a href="#">View Components</a>		<a href="#">Delete</a>



## Configure the Ensemble Building Block

Click on "Configure Building Block Settings" to add details.

## Enter Details for the Ensemble Building Block

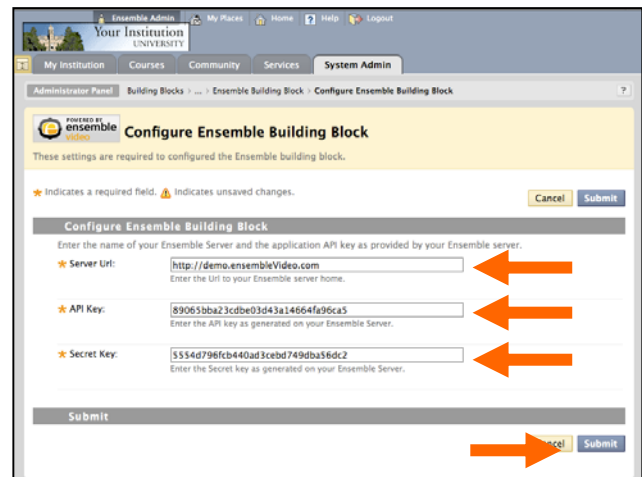
Enter the Server URL

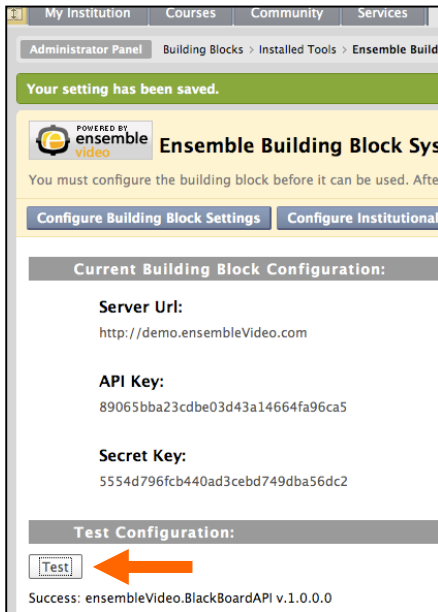
Enter the API Key

Enter the Secret Key you received from setting up the keys in Ensemble Video 3.2

Click the "Submit" button.

*NOTE:* when copying/pasting the keys, make sure it doesn't contain any leading or trailing spaces.



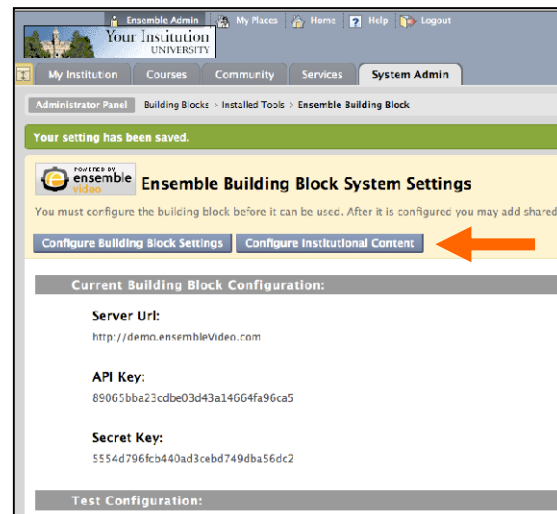


## Configure Institutional Content

Back at the Ensemble Building Block system settings page, click “Test” to test the Building Block communication with Ensemble Video 3.2

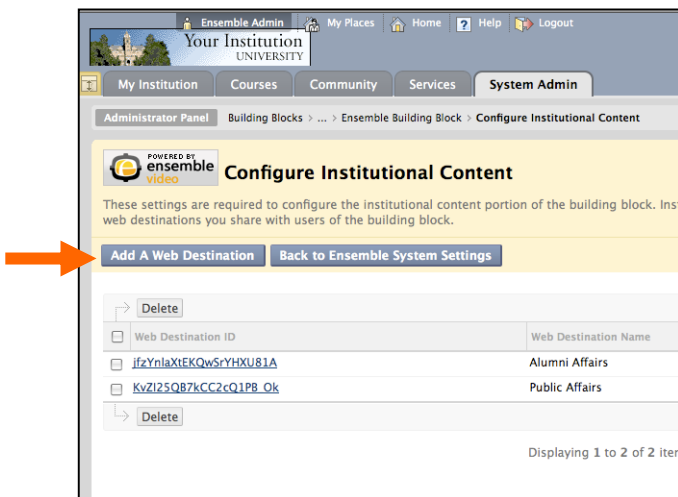
## Configure Institutional Content

Click “Configure Institutional Content.”



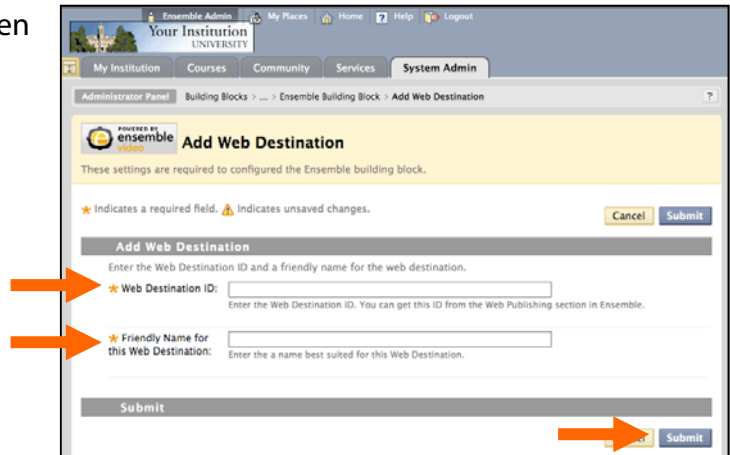
## Configure Institutional Content

Click “Add a Web Destination” to add your Ensemble Video web destination or institutional content.



## Add ID and Name

Add Ensemble Video Web Destination ID and then add a Friendly name, click "Submit."



Ensemble Admin Your Institution UNIVERSITY

My Institution Courses Community Services System Admin

Administrator Panel Building Blocks > ... > Ensemble Building Block > Add Web Destination

Powered by ensemble video **Add Web Destination**

These settings are required to configure the Ensemble building block.

★ Indicates a required field. ⚠ Indicates unsaved changes. Cancel Submit

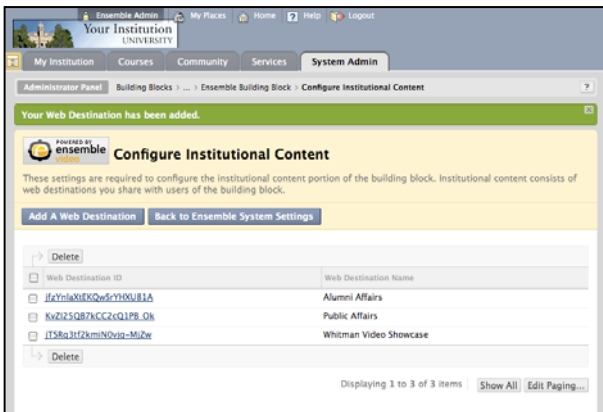
**Add Web Destination**

Enter the Web Destination ID and a friendly name for the web destination.

★ Web Destination ID:   
Enter the Web Destination ID. You can get this ID from the Web Publishing section in Ensemble.

★ Friendly Name for this Web Destination:   
Enter the a name best suited for this Web Destination.

Submit Submit



Ensemble Admin Your Institution UNIVERSITY

My Institution Courses Community Services System Admin

Administrator Panel Building Blocks > ... > Ensemble Building Block > Configure Institutional Content

Your Web Destination has been added.

Powered by ensemble video **Configure Institutional Content**

These settings are required to configure the institutional content portion of the building block. Institutional content consists of web destinations you share with users of the building block.

Add A Web Destination Back to Ensemble System Settings

<input type="checkbox"/>	Delete	Web Destination ID	Web Destination Name
<input type="checkbox"/>		#eYnloXtEKQwScYH0UJ1A	Alumni Affairs
<input type="checkbox"/>		KvZi23QB7hCC2cQ1PR_0k	Public Affairs
<input type="checkbox"/>		IT58a3tFzkmN0vta-Mi2w	Whitman Video Showcase

Displaying 1 to 3 of 3 items Show All Edit Paging...

**Your Ensemble Video Content is Connected with Blackboard and available in Blackboard.**